



DRURY WORKS

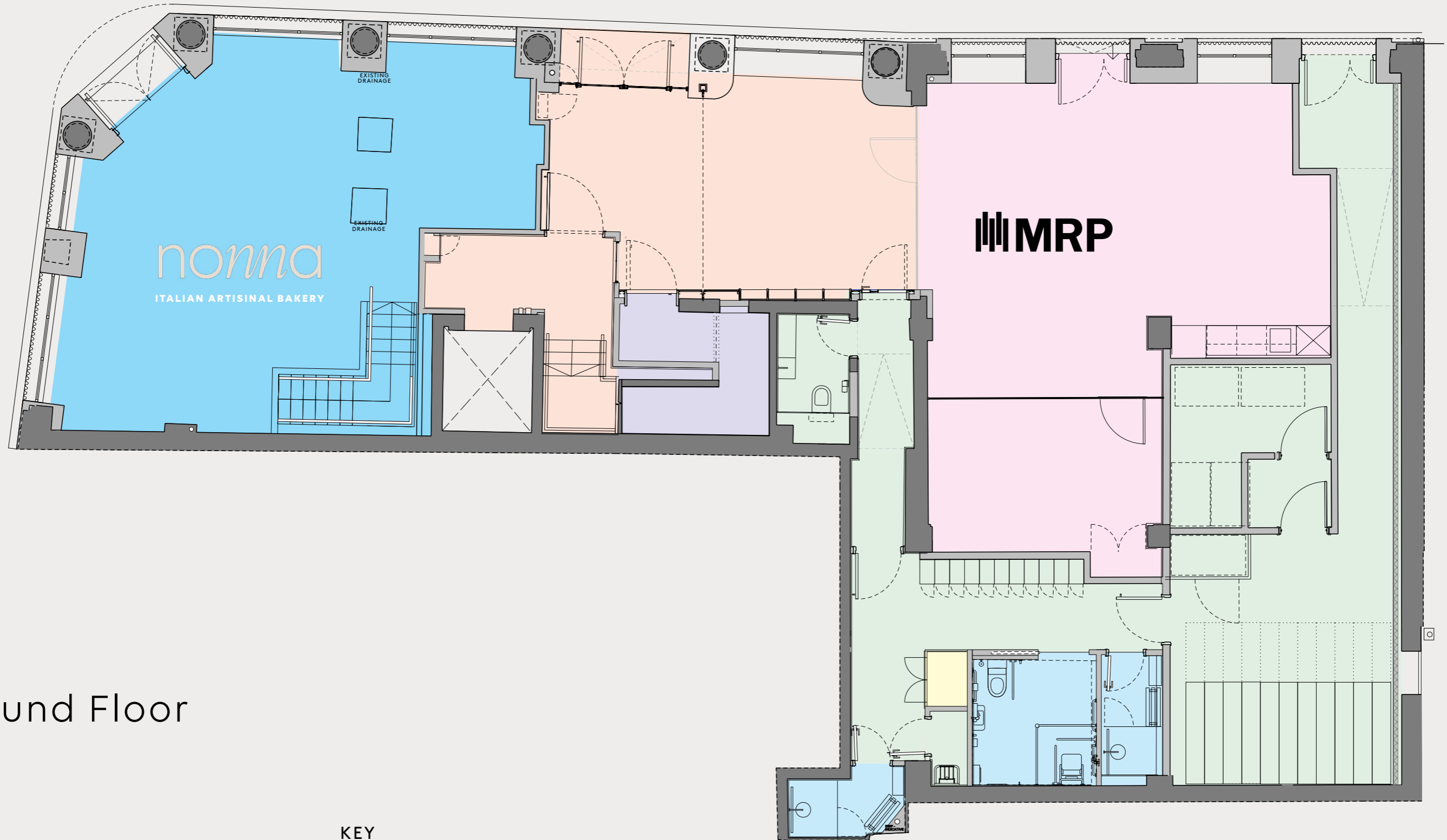
Covent Garden, WC2

FLOOR PLANS

Area Schedule

DEMISE	AVAILABILITY	NIA (SQ FT)
5TH	Available	1,820
4TH	Available	2,046
3RD	Available	2,056
2ND	Available	2,056
1ST	Let to McAleer & Rushe/MRP	-
GROUND	Let to McAleer & Rushe/MRP	-
GROUND RETAIL	Let to Nonna Bakery	-
TOTAL		7,978

Floor Plans

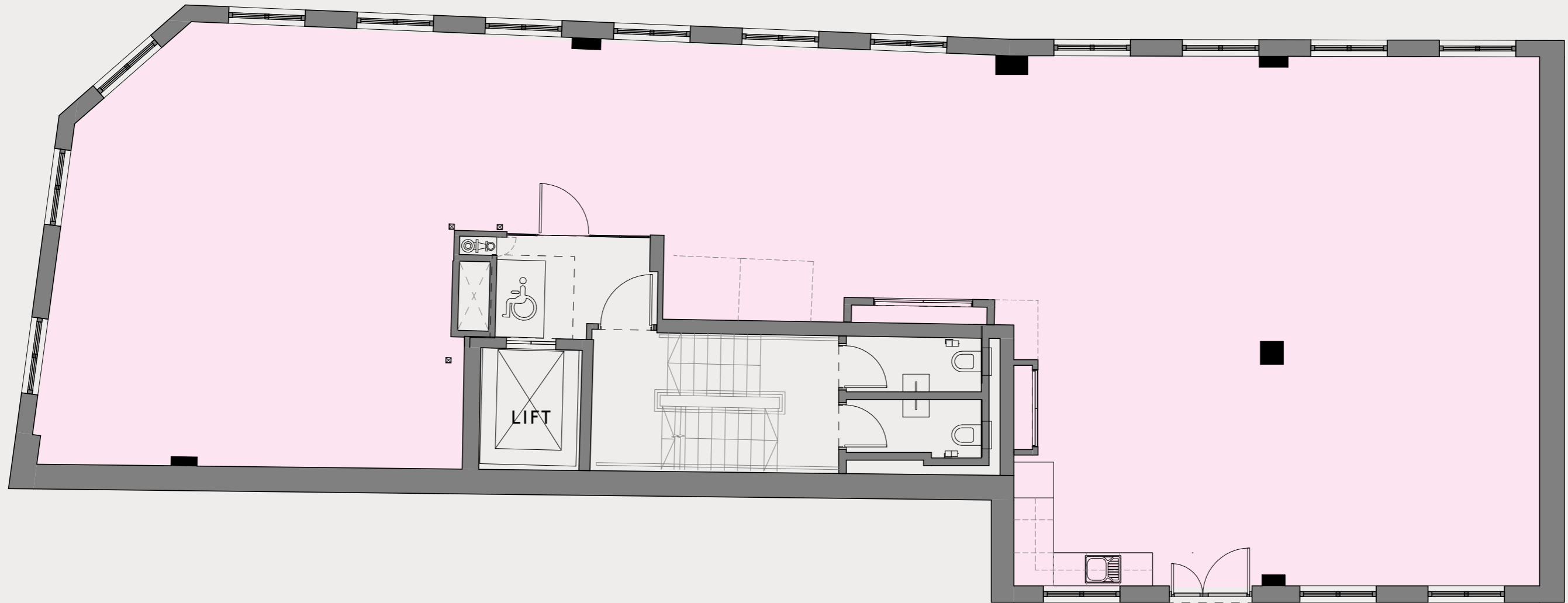


Ground Floor

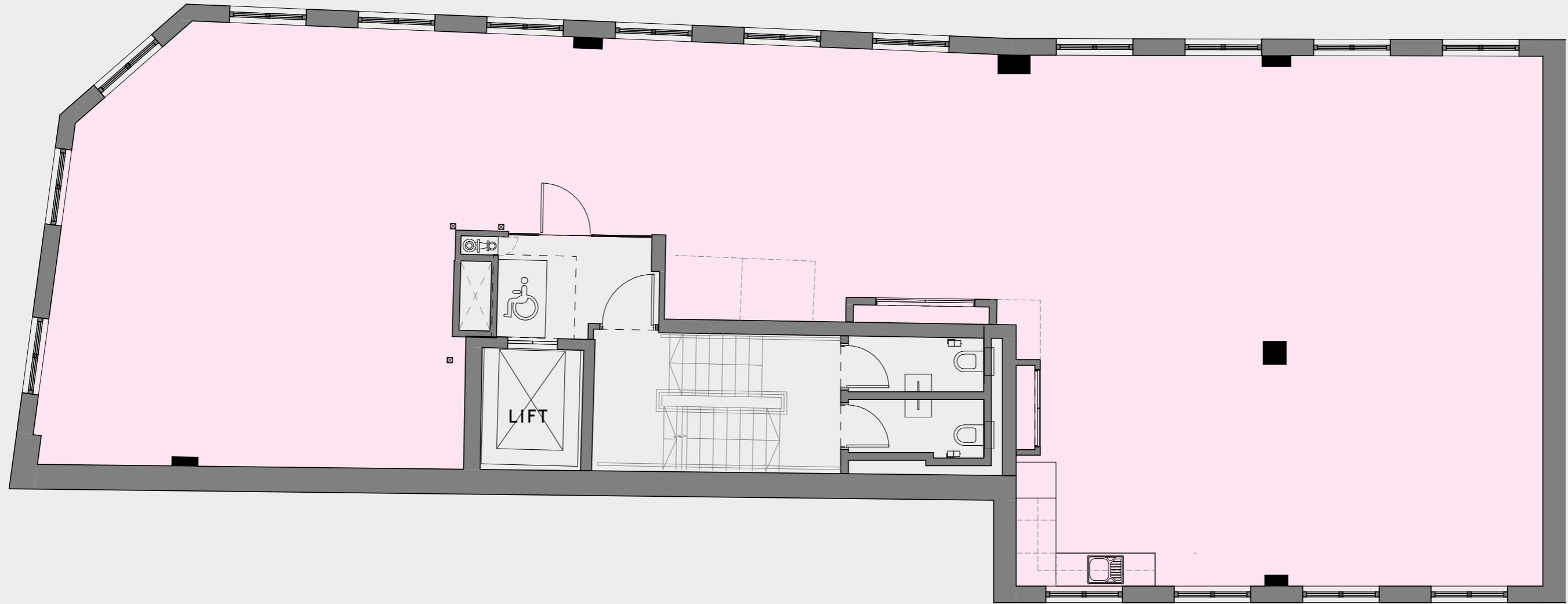
KEY

- Office
- Retail
- Reception
- Common Parts
- Showers
- Drying Cupboard
- Plant

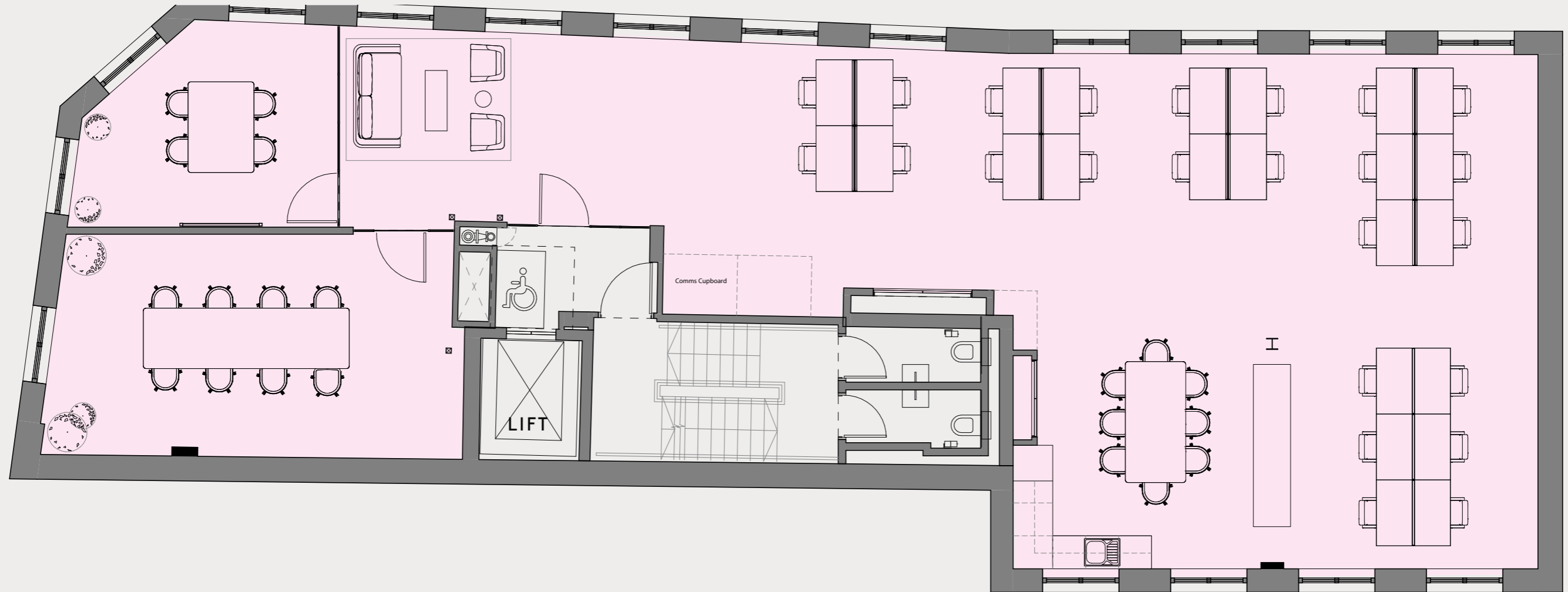
NOT TO SCALE.
INDICATIVE ONLY.



Second Floor
2,056 sq ft

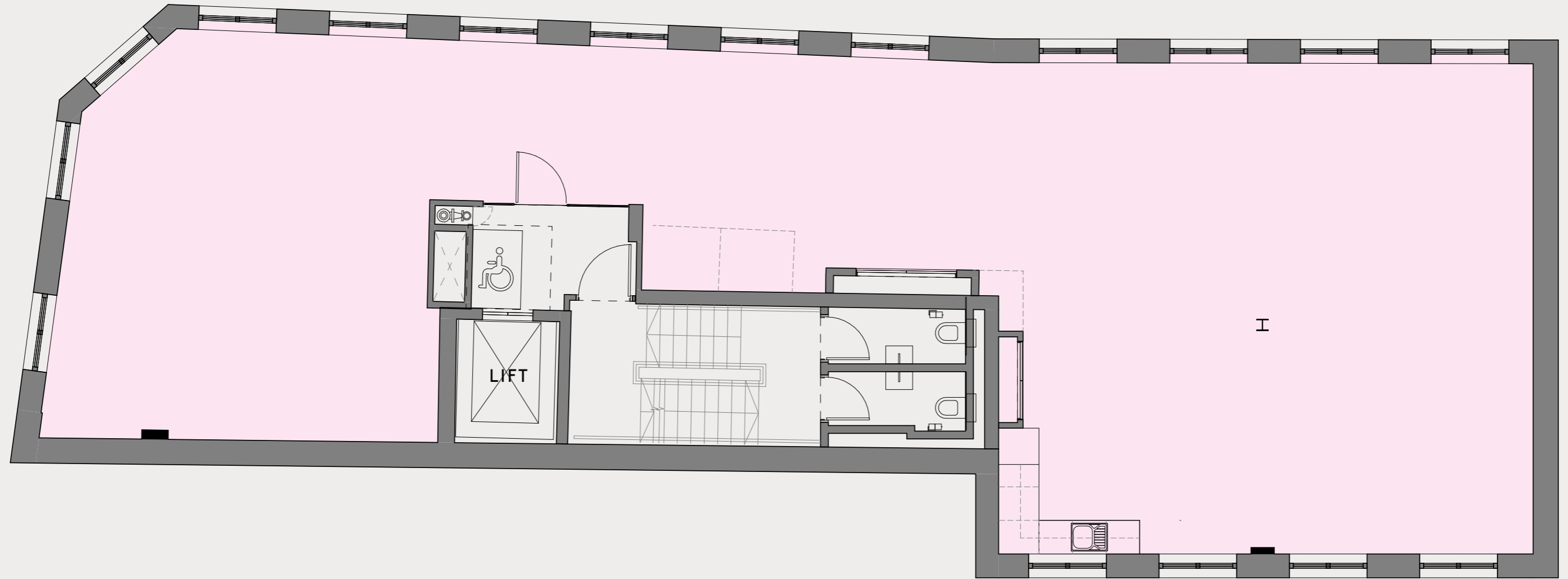
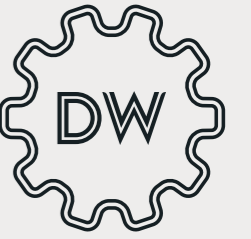


Third Floor
2,056 sq ft



Fourth Floor - Fit Out

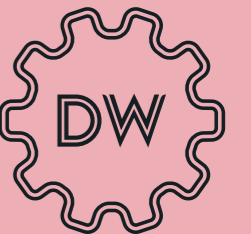
2,046 sq ft



Fifth Floor
1,820 sq ft



Contact



OFFICE
Oliver Watkins
07976 577325
Oliver.Watkins@knightfrank.com

Lydia Carter
07929 668005
Lydia.Carter@knightfrank.com

A DEVELOPMENT BY:

Important notice

1. Particulars: These particulars are not an offer or contract, nor part of one. You should not rely on statements by Knight Frank in the particulars or by word of mouth or in writing ("information") as being factually accurate about the property, its condition or its value. Knight Frank have any authority to make any representations about the property, and accordingly any information given is entirely without responsibility on the part of the agents, seller(s) or lessor(s).
2. CGIs / Photos etc: The CGIs show only a depiction of the property. Areas, measurements and distances given are approximate only.
3. Regulations etc: Any reference to alterations to, or use of, any part of the property does not mean that any necessary planning, building regulations or other consent has been obtained. None of the services or appliances have been tested and no warranty is given or is to be implied that they are in working order. A buyer or lessee must find out by inspection or in other ways that these matters have been properly dealt with and that all information is correct.
4. VAT: The VAT position relating to the property may change without notice. May 2026. cube-design.co.uk Q5939